

3. Circle the rhythm you hear.

The image shows three musical staves, each in 3/2 time. Each staff contains a sequence of notes and rests. The first staff starts with a quarter note, followed by a beamed eighth-note triplet, then two quarter notes, a quarter rest, and a half note. The second staff starts with a quarter note, followed by a beamed eighth-note triplet, then a quarter note, a quarter rest, a quarter note, a quarter rest, a quarter note, a quarter rest, and a half note. The third staff starts with a quarter note, followed by a beamed eighth-note triplet, then a quarter note, a quarter rest, a quarter note, a quarter rest, a quarter note, a quarter rest, and a half note.

4. Circle the triad you hear.

- A. Major Minor Diminished Augmented
- B. Major Minor Diminished Augmented

5. Circle the cadence you hear at the end of each phrase.

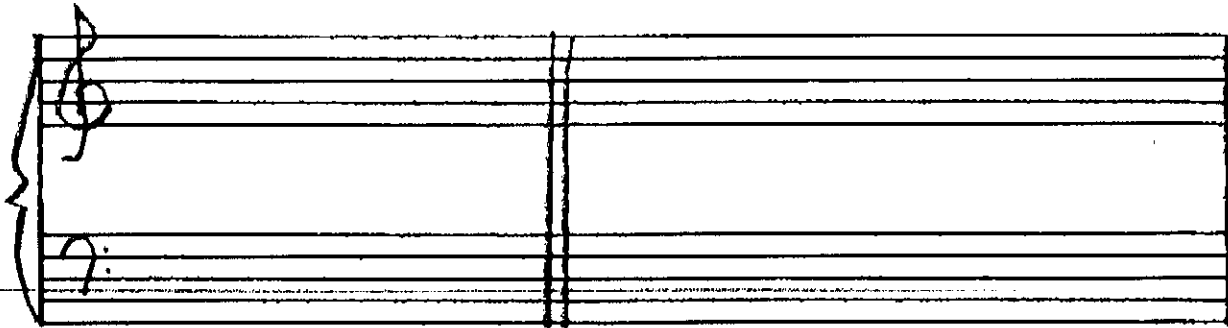
- A. Authentic Plagal Half Deceptive
- B. Authentic Plagal Half Deceptive

[students will hear this.]

The image shows a handwritten musical score for two staves. The first staff is in treble clef and the second in bass clef. The key signature changes from two sharps (F# and C#) to two flats (Bb and Eb). The time signature is 3/2. The music consists of several measures of notes and rests, ending with a cadence.

Written section

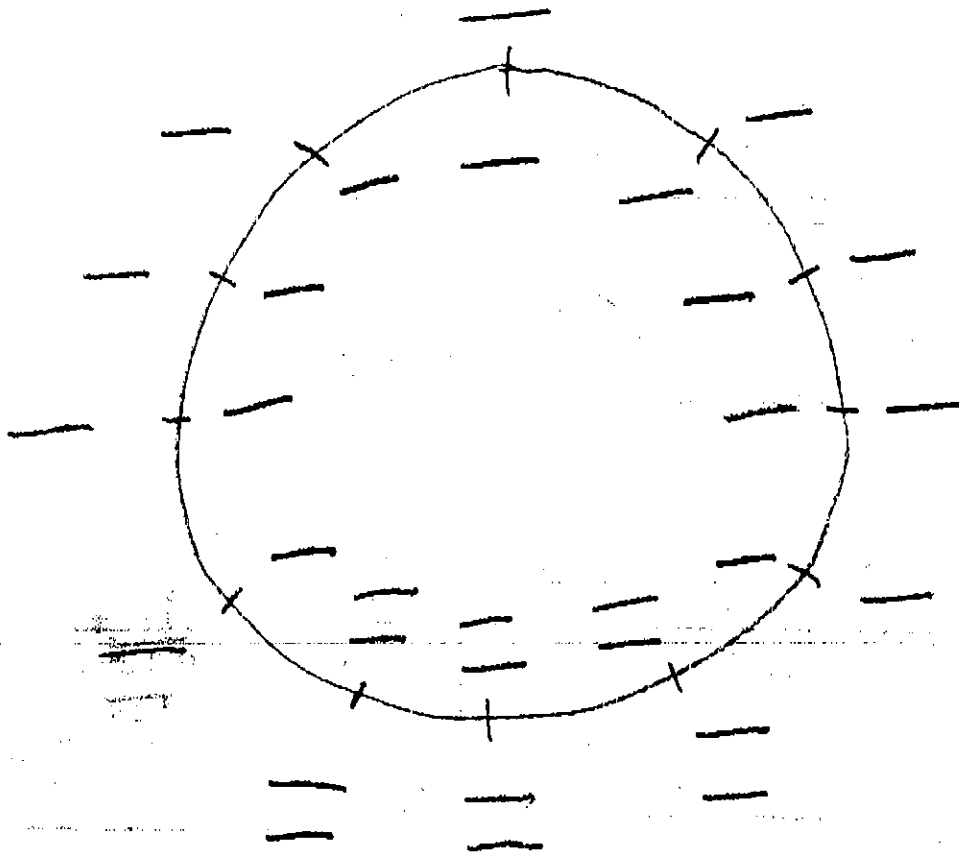
6. Write the following key signatures in bass and treble clefs, using standard placement of sharps or flats.



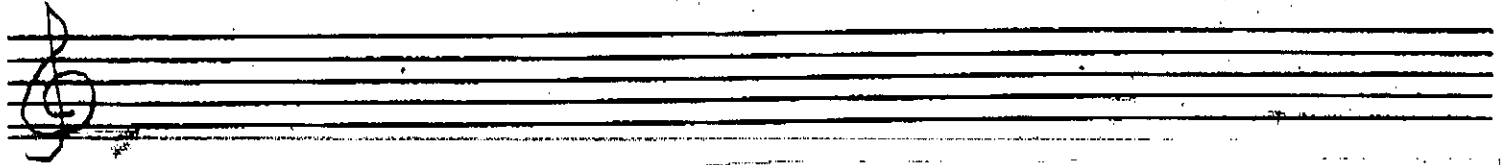
D^b Major

F[#] minor

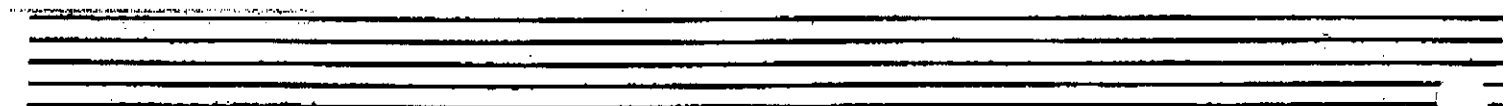
7. Write the names of major keys in CAPITAL LETTERS on the outside of the circle of fifths and the names of minor keys in lower case letters on the inside of the circle of fifths.



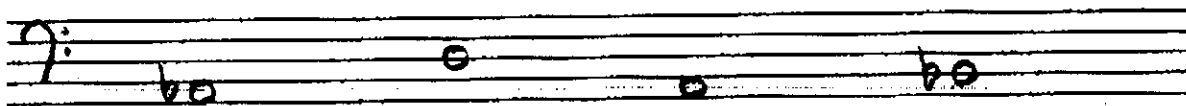
8. Copy the following melody on the blank staff provided, correcting four mistakes in notation.



9. Transpose this melody to the key a major third higher.



10. Write these intervals up from the given pitch.



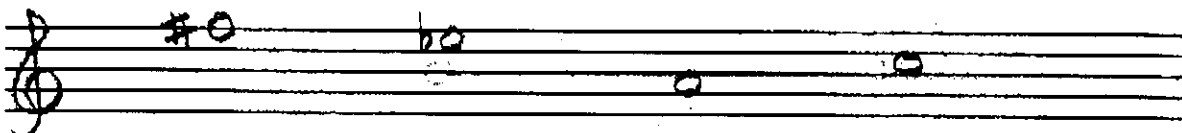
P5

M3

Aug. 6

Dim. 7

11. Write these intervals down from the given pitch.



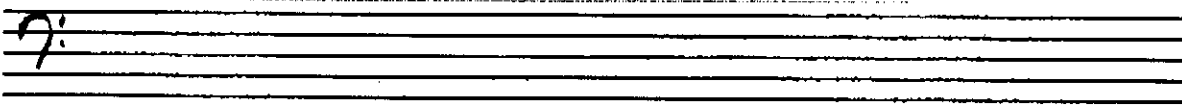
P4

m3

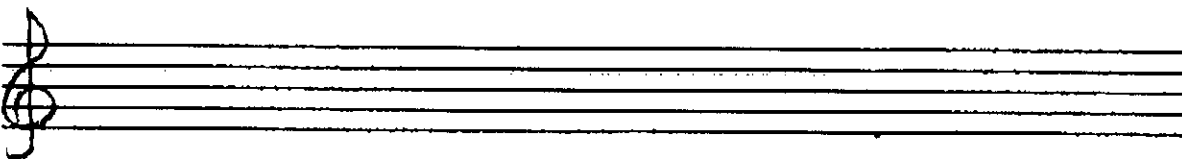
Aug. 4

Dim. 5

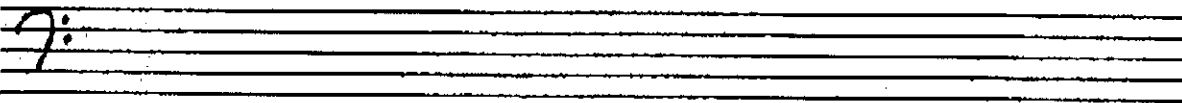
12. Write the following scales, using individual accidentals.



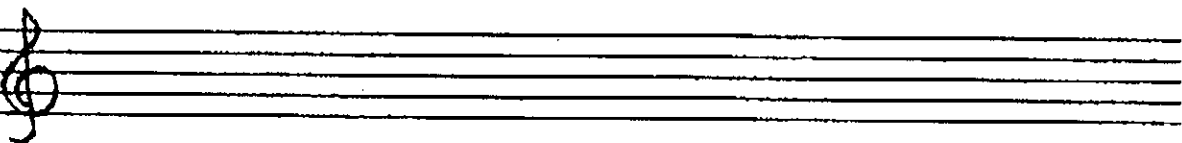
G harmonic minor, ascending



F# Major, ascending

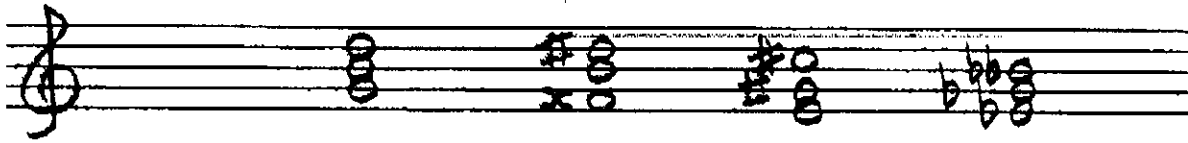


E^b natural minor, ascending



D# melodic minor, ascending and descending

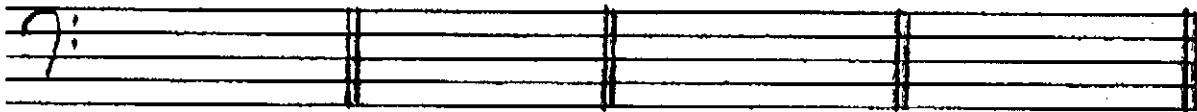
13. Identify these triads by root name, quality (major, minor, diminished, augmented), and position (root position, first inversion, second inversion).



Root and quality: _____

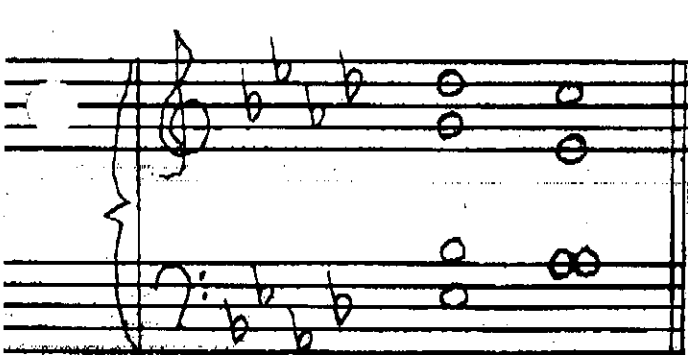
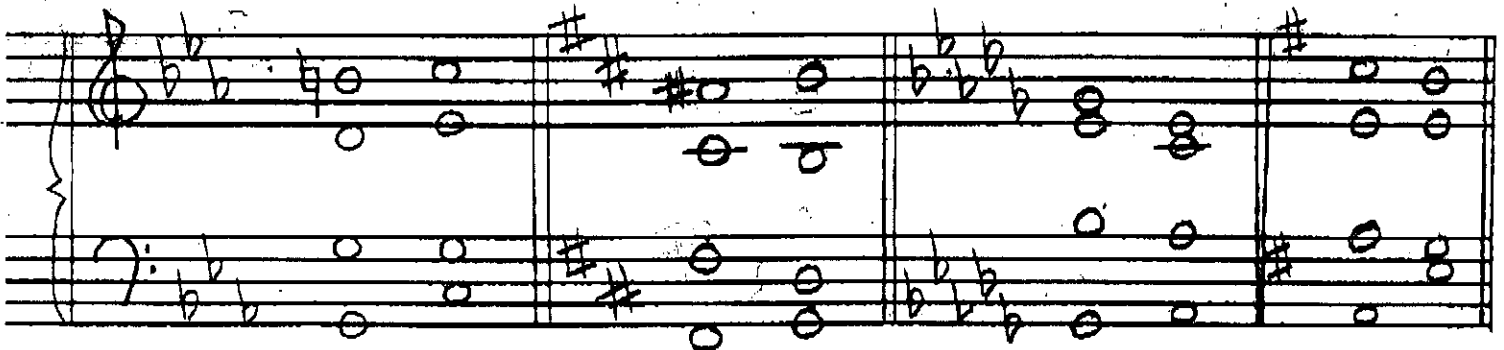
Position: _____

14. Write the following chords in the key indicated.



e: vii^{o7} B^b: iii B: vi f: III

15. Identify each cadence type.



16. Analyze the following four-part example, identifying the key signature, Roman Numerals and figured bass.

17. Write the scale degree name for each note the scale, beginning with "tonic."

18. Draw bar lines in the appropriate places.

19. Add one note or rest to complete each measure.